

REF.5207 CONTACTLESS BUTTON



DESCRIPTION

Contactless button, with attractive design. Blue led at stand-by and green at detection.

Made of 1.7mm stainless steel, with a detection range of 7cm.

The button is activated during the time of detection of the hand, without the need for physical contact.

It is compatible with standard mechanism boxes

FUNCTIONS

EXIT BUTTON

The new Fermax contactless exit button is activated by simply moving your hand closer. With this solution it is no longer necessary to touch it to activate it, thus reducing the risk of infection. The button can be powered from the outdoor visitor call panel.

CALL BUTTON

The contactless button can also be used as a doorbell, activating a doorbell or being connected directly to one of the FERMAX monitors with doorbell function, to perform the DING-DONG function of the home entry button. The button must be powered from an external power supply.

INSTALLATION

Since it has an active detection circuit, this contactless button requires a power supply. Therefore 2 additional wires are required to connect the button to an external power supply from 12 to 24 Vdc.

A 12Vdc output is available on the FERMAX outdoor panels that can be used for this purpose. In addition, the usual 2 wires of any pushbutton will be necessary, which will activate the desired bell or device, making a shortcut by means of a relay.

The installation of the button can be flush mounted, being compatible with the universal mechanism boxes, or surface mounted with the optional surface box.

ACCESORIES

- Ref. 5208 CONTACTLESS PUSHBUTTON SURFACE BOX
- Ref. 4813 12Vdc/2A POWER SUPPLY

TECHNICAL SPECIFICATIONS

GENERAL SPECS

1.7mm Stainless Steel.

Compatible with universal mechanism box or surface box.

Detection range 7cm.

Blue colour LED (standby). Green colour LED (active)

DIMENSIONS

86(W) x 86(H) x 1,7(D) mm.

POWER AND CONSUMPTIONS

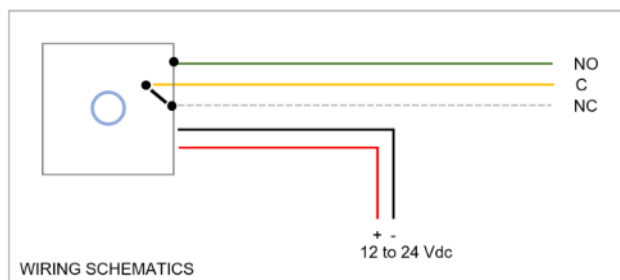
12 to 24 Vdc

12 Vdc / 27 mA (standby)

12 Vdc / 48 mA (active)

Supported current 3A 125-250 Vca

CONNECTIONS



PREWIRING

RED: 12Vdc power supply + input

BLACK: 12Vdc power supply - input

WHITE: Normally close connection NC

YELLOW: Common reference connection C

GREEN: Normally open connection NO