

**GERMAN
DESIGN
AWARD
SPECIAL
2017**



DATASHEET: SEPT 2023

DIVUS TOUCHZONE

The Synergy Touch

TZ07 - TZ10 - TZ15 - TZ19
VER.4



DIVUS TOUCHZONE

TOUCH PANEL FOR WALL MOUNT TECHNICAL DATA



TZ07 - W



TZ10 - B



TZ15 - W



TZ19 - B

| | TZ07 - V4 | TZ10 - V4 | TZ15 - V4 | TZ19 - V4 |
|----------------|--|-----------|-----------|-----------|
| Type of design | ultra compact embedded PC for wall mount; android operation system for your applications; noiseless and without any rotating part, ultra low power homogeneous smooth glass surface with aluminium side border | | | |

VERSIONS

| | | | | |
|------------------------|----------------------------|----------------------------------|----------------------------------|----------------------------|
| With Black cover glass | TZ07-B | TZ10-B (antibacterial treatment) | TZ15-B (antibacterial treatment) | TZ19-B |
| With White cover glass | TZ07-W (ultra clear glass) | TZ10-W (ultra clear glass) | TZ15-W (ultra clear glass) | TZ19-W (ultra clear glass) |

SOFTWARE

| | | | | |
|-----------------------|---|---|---|---|
| Operating System | Android 9 | | | |
| FRONT UNIT | 7,0" - 17,78 CM WIDESCREEN LED BACKLIGHT TFT | 10,1" - 25,6 CM WIDESCREEN LED BACKLIGHT TFT | 15,6" - 39,6 CM WIDESCREEN LED BACKLIGHT TFT | 18,5" - 47,0 CM WIDESCREEN LED BACKLIGHT TFT |
| Luminosity | 500 cd/m ² | 250 cd/m ² | 300 cd/m ² | 300 cd/m ² |
| Contrast | 400 : 1 | 400 : 1 | 500 : 1 | 1000 : 1 |
| Resolution (in Pixel) | WSVGA (1024*600) | WSVGA (1024*600) | HD (1366*768) | HD (1366*768) |
| MTBF backlight | 50.000 h | 30.000 h | 50.000 h | 50.000 h |
| Method of operating | Projected capacitive touch screen with 3 mm glass front, dual touch capable | | | |
| Rating | IP20 according EN 60529 | | | |

GENERAL CHARACTERISTICS

| | | | | |
|---------------------------------------|---|-----------|-----------|---------------|
| Processor | Fanless ultra low consumption Dual-core Cortex-A72 1.8GHz and Quad-core Cortex-A53 1.4GHz | | | |
| Memory | 2 GB (optional 4GB, connected to MOQ) | | | |
| Free expansion slots | microSD Slot | | | |
| Power Supply | PoE+ compatible with Cat5e/Cat6 UTP cable, max 100m IEEE Std 802.3at™ 12-32 VDC | | | NO POE |
| Power consumption without peripherals | Max. 9 W | Max. 18 W | Max. 25 W | Max. 30 W |
| Guarantee | 24 Months* | | | |

DRIVES

| | | | | |
|----------------|--|--|--|--|
| Storage medium | High speed Flash Memory 16GB eMMC (available disk space tbd) | | | |
|----------------|--|--|--|--|

DIVUS TOUCHZONE



TOUCH PANEL FOR WALL MOUNT TECHNICAL DATA

| | TZ07-V4 | TZ10-V4 | TZ15-V4 | TZ19-V4 |
|-----------------------------------|--|---|---|---|
| SENSORS | | | | |
| Proximity sensor | INCLUDED | | | |
| G Sensor for orientation | AUTOMATIC PORTRAIT / LANDSCAPE ORIENTATION | | | |
| Brightness Sensor | INCLUDED | | | |
| MULTIMEDIA | | | | |
| Input/output | Loudspeaker 2 Watt RMS (ext) Microphone (ext) | | | |
| Functionality | Integrated Echo cancellation for bi-directional interphone communication | | | |
| INTERFACES | | | | |
| LAN/Ethernet/BT | 1 x GbE on RJ45 - 45 degree with 802.3at™ (ext) 1 x WiFi 802.11 a/b/g/n - optional 1 x Bluetooth 4.0 LE - optional | | 1 x GbE on RJ45 - 45 degree | |
| USB (Universal Serial Bus) | 2 x USB 2.0 (2x ext) 1 x mini USB OTG | | | |
| Serial | 1 x RS-232/422/485 (int, optional on pinheader) | | | |
| Digital Input/Output | GPIO - 4 x Input / 4 x Output for 4 relais with max. 100 mA/5VDC Clocking is possible, frequency depends on APK | | | |
| Battery | Battery free system - RTC with capacitor backup | | | |
| SURVEILLANCE | | | | |
| Status LEDs | 1 x RGB LED - covered by design frame | | | |
| AMBIENT CONDITIONS | | | | |
| EMC | IEC 63044-1:2017, IEC 63044-5-1:2019, IEC 63044-5-2: 2019; CISPR 32: 2015; CISPR 35: 2017; EN 50486:2008 (§4.2); EN 50428:2005+A1:2007+A2:2009 | | | |
| SAFETY | EN IEC 63044-3:2018 in conjunction with: IEC 62368-1:2014 (Second Edition), EN 62368-1:2014+A11:2017 | | | |
| Temperature | +0°C to +30°C max. | | | |
| Relative humidity | 5% to 80% at 25°C (no humidity/condense) | | | |
| Authorization | CE | | | |
| DIMENSIONS | | | | |
| Cut-Out with MTZ [mm] | 129 x 210 x 75 | 281 x 189 x 80 | 428 x 291 x 80 | 507 x 330 x 80 |
| Outside with Frame CTZ [mm] | 136 x 213 - This product is delivered with capacitive touch frame | 288 x 200 - This product is delivered with capacitive touch frame | 435 x 306 - This product is delivered with capacitive touch frame | 515 x 345 This product is delivered with capacitive touch frame |
| Weight | 0,9 kg | 4 kg | 7 kg | 9 kg |
| MECHANICAL CHARACTERISTICS | | | | |
| Mounting | Fast and easy one man mounting system with wall mount boxes | | | |
| Front | Steel and alloy anodized, to use with the wall mount box (MTZ) and cover (CTZ) | | | |
| PC Unit | Alloy anodised, EMC proofed | | | |

*warranty ex works, normally 24 months, fixed at order. All data refer on print date, errors and changes excepted.

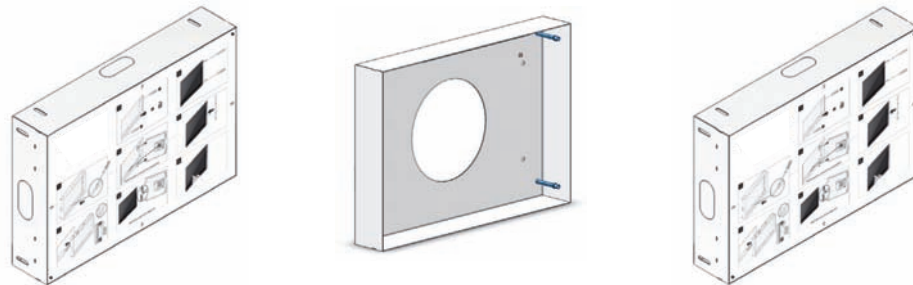
NOTE: Internal connections are intended as inside the box unit, normally on pin header, external ones as outside the box. Nevertheless, once mounted in the wall, only connections described as "front accessible" will be reachable for the customer.



DIVUS TOUCHZONE

WALL MOUNT BOX

| TYPES | IN WALL BOX | ON WALL BOX | IN MORTARLESS BOX |
|------------------|-------------|-------------|-------------------|
| for TZ07 – 7,0" | MTZ07 | - | MTZ07-T |
| for TZ10 – 10,1" | MTZ10 | MTZ10A | MTZ10-T |
| for TZ15 – 15,6" | MTZ15 | MTZ15A | MTZ15-T |
| for TZ19 – 18,5" | MTZ19 | - | MTZ19-T |



TECHNICAL DATA

| | | | |
|----------------|--|--|---|
| Type of design | compact, stable and flat wall mount box for flush mounting | black powder coated on-wall box with cable outlet on the back side | compact flush mounting kit for mortarless constructions |
|----------------|--|--|---|


DIMENSIONS [MM]


| | | | |
|--------------------------|----------------|----------------|---|
| Cut-Out fixing kit 7,0" | 129 x 210 x 75 | - | 129 x 210 x 75 - required space 190 x 210 x 75 |
| Cut-Out fixing kit 10,1" | 281 x 189 x 80 | 284 x 195 x 65 | 281 x 189 x 80 - required space 341 x 189 x 80 |
| Cut-Out fixing kit 15,6" | 428 x 291 x 80 | 431 x 300 x 65 | 428 x 291 x 80 - required space 488 x 291 x 80 |
| Cut-Out fixing kit 18,5" | 507 x 330 x 80 | - | 507 x 330 x 80 - required space 567 x 330 x 80 |
| Weight | ca. 4kg | | ca. 4kg |

MECHANICAL CHARACTERISTICS

| | | | |
|----------------|---|---|---|
| Wall mount box | TZ07 plastic with cover for clean installation | | TZ07 plastic with cover for clean installation |
| Wall mount box | TZ 10 - 15 - 19 steel plate with cover for clean installation | TZ 10 -15 black powder coated on wall mount box | TZ 10 - 15 - 19 steel plate with cover for clean installation |
| Cable access | 1xtop, 1xbottom, 1xleft, 1xright | 1 x back side | 1xtop, 1xbottom, 1xleft, 1xright |
| Grounding | the Wall Mount Box needs to be professionally grounded | | |

MONTAGE / INSTALLATION INSTRUCTIONS / INSTALLAZIONE

 Die Unterputzdose und das Trockenbaukit können in einem Ausschnitt in der Wand oder in einem bis zu 1,5 cm dünnen Möbelstück, sowie in einem Trockenbau befestigt werden. Der Ausschnitt muss den in den technischen Details spezifizierten Maßen entsprechen und beim Wandeinbau mindestens 9 cm tief sein.
Im Wandausschnitt wird die Unterputzdose eingemauert, während sie im Möbelstück angeschraubt werden kann. Es ist wichtig, dass die vordere Kante der Unterputzdose plan und waagrecht zur Oberfläche der Wand oder des Möbelstückes ist.

 The wall mount box an the mounting kit may be installed in a cut out in the wall, in a wooden structure thick at least 1,5 cm or in a dry mortarless construction. The cut out has to respect the sizes specified in the technical data and has to be at least 9 cm deep.
In the wall cut out, the box can become build in while it can be screwed on in a piece of furniture. It is important that the fore edge of the box is flat and horizontally to the surface of the wall or the piece of furniture.